



BIS Certified Driver

IS 10322 (Part 5/Sec3 : 2012)



R-71023973  
BIS Certified Product



# LED DRIVER MODULES

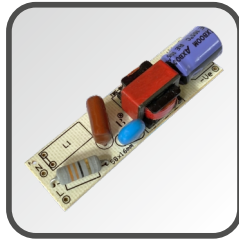
## NON-ISOLATED LED DRIVERS

### 5-10W BULB / BATTEN DRIVER



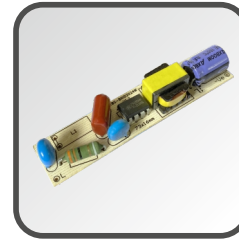
Wattage : 5-10W  
Voltage : 78V DC  
Current : 100mA  
Surge : 3KV  
Dimension : 35 x 16

### 18-20W BATTEN DRIVER



Wattage : 18-20W  
Voltage : 72-78V DC  
Current : 240mA  
Surge : 4KV  
Dimension : 58 x 16

### 24W BATTEN DRIVER



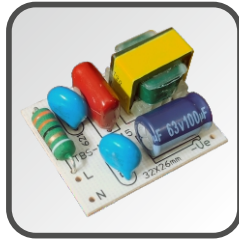
Wattage : 22-24W  
Voltage : 72V DC  
Current : 300mA  
Surge : 4KV  
Dimension : 73 x 16

### 36 | 40W BATTEN DRIVER



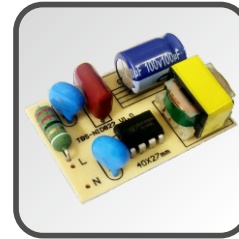
Wattage : 36-40W  
Voltage : 78V DC  
Current : 420 | 460mA  
Surge : 5KV  
Dimension : 140 x 17

### 8-15W PANEL DRIVER



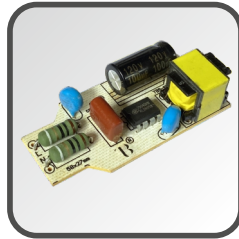
Wattage : 8-15W  
Voltage : 24-45V DC  
Current : 300mA  
Surge : 4KV  
Dimension : 32 x 24

### 8-22W PANEL DRIVER



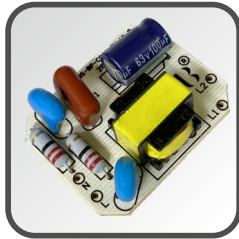
Wattage : 8-22W  
Voltage : 24-72V DC  
Current : 300mA  
Surge : 4KV  
Dimension : 40 x 27

### 24 - 30W PANEL DRIVER



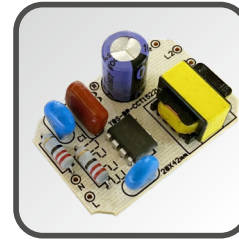
Wattage : 24-30W  
Voltage : 70-90V DC  
Current : 300mA  
Surge : 4.5KV  
Dimension : 58 x 27

### 8-15W CCT | 3 in 1 PANEL DRIVER



Wattage : 8-15W  
Voltage : 24-45V DC  
Current : 300mA  
Surge : 4KV  
Dimension : 36 x 28

### 15-22W CCT | 3 in 1 PANEL DRIVER



Wattage : 15-22W  
Voltage : 45-72V DC  
Current : 300mA  
Surge : 4KV  
Dimension : 42 x 28

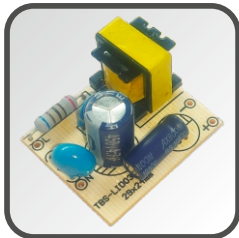
## ISOLATED LED DRIVERS

### 3W LPF LED DRIVER



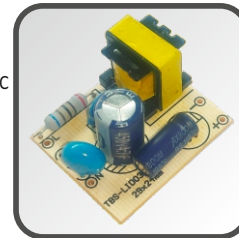
Wattage : 3W  
Voltage : 6-12V DC  
Current : 300mA  
Surge : 2.5KV  
Dimension : 30 x 16

### 4-7W LPF LED DRIVER



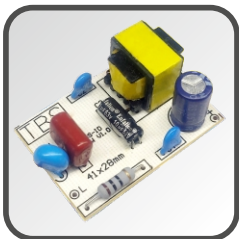
Wattage : 4-7W  
Voltage : 28-42 | 18-24V DC  
Current : 150 | 300mA  
Surge : 3KV  
Dimension : 29 x 24

### 10 | 12W LPF LED DRIVER



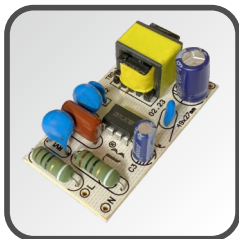
Wattage : 10W | 12W  
Voltage : 28-42V DC  
Current : 250 | 300mA  
Surge : 3KV  
Dimension : 29 x 24

### 8 - 12W HPF LED DRIVER



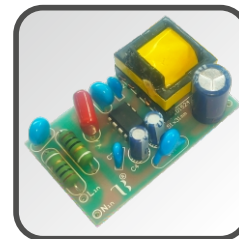
Wattage : 10W | 12W  
Voltage : 28-42V DC  
Current : 250 | 300mA  
Surge : 3.5KV  
Dimension : 43 x 29

### 15W HPF LED DRIVER



Wattage : 15W  
Voltage : 28-45V DC  
Current : 300 | 350mA  
Surge : 4KV  
Dimension : 49 x 27

### 18 - 24W HPF LED DRIVER



Wattage : 18 | 24W  
Voltage : 36 | 72V DC  
Current : 300 | 450 | 500mA  
Surge : 4KV  
Dimension : 51 x 31

BIS Certified Driver



# LED DRIVER MODULES

## ISOLATED LED DRIVER

### 24 - 30W HPF LED DRIVER



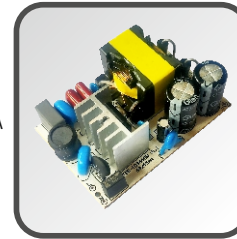
**Wattage** : 24 | 30W  
**Voltage** : 28-42V DC  
**Current** : 600 | 750mA  
**Surge** : 4.5KV  
**Dimension** : 75 x 31

### 32 - 40W HPF LED DRIVER



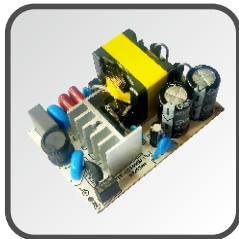
**Wattage** : 32 | 36 | 40W  
**Voltage** : 28-42V DC  
**Current** : 800|900|1000mA  
**Surge** : 4.5KV  
**Dimension** : 80 x 35

### 50W HPF LED DRIVER



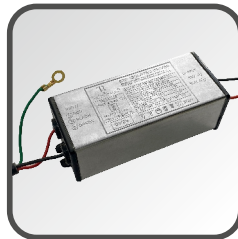
**Wattage** : 50W  
**Voltage** : 36V | 63V DC  
**Current** : 700/1200/1500mA  
**Surge** : 5KV  
**Dimension** : 68 x 45

### 60W HPF LED DRIVER



**Wattage** : 60W  
**Voltage** : 42-55V DC  
**Current** : 1200mA  
**Surge** : 5KV  
**Dimension** : 68 x 45

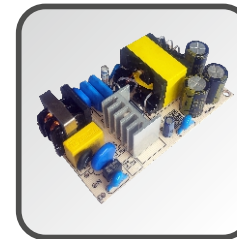
### 50W HPF POTTED LED DRIVER



**Wattage** : 50W  
**Voltage** : 55-63V DC  
**Current** : 700mA  
**Surge** : 6KV  
**Dimension** : 78 x 38

New Launch

### 100W HPF LED DRIVER



**Wattage** : 100W  
**Voltage** : 48-55V DC  
**Current** : 1500mA  
**Surge** : 6KV  
**Dimension** : 95 x 55

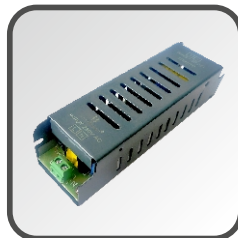
## SMPS

### 12V/2 AMP SMPS



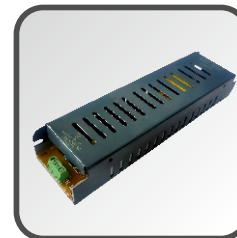
**Voltage** : 12V DC  
**Current** : 2 AMP  
**Surge** : 3.5KV  
**Dimension** : 95 x 35

### 12V/5 AMP SMPS



**Voltage** : 12V DC  
**Current** : 5 AMP  
**Surge** : 3.5KV  
**Dimension** : 140 x 40

### 12V/10 AMP SMPS



**Voltage** : 12V DC  
**Current** : 10 AMP  
**Surge** : 3.5KV  
**Dimension** : 192 x 50

IS 15885



R-71016144  
BIS Certified Driver

## Manufacturing Plant & Office Address

**Office** :- 223, 224 2nd Floor, Sardar Griha Co. Op. Housing Society, Lohar Chawl, 198, L.T. Road, **Mumbai** - 400002.

**Factory 1** :- Unit 9,10,11 Sheetal Supreme Indl. Estate No : 2, Sativali road, Vasai (E), Palghar-401208, **Maharashtra**.

**Factory 2** :- B-108/109, GIDC, Electronics Estate, Sector-25, Gandhinagar - 382025, **Gujarat**.

☎ : +91 98217 26818 / + 91 95942 99994

✉ : info@technobeamsystems.com

🌐 : www.technobeamsystems.com